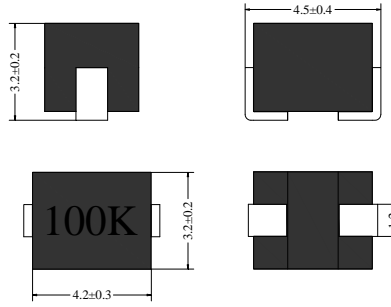


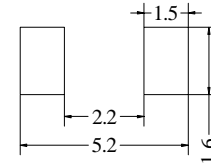
Inductance Range: 0.1 μ H~220 μ H
 Temperature Range: -40 $^{\circ}$ C~+125 $^{\circ}$ C

PEM453232 Series

DIMENSIONS(mm):



LAND PATTERNS(mm) CONSTRUCTION



Shield



FEATURES:

- Quantity / Reel:500pcs
- Small products, Round 4.5mm, Height 3.4mm Typ.
- High resistance to heat and humidity. Accurate dimensions for automatically surface mounted. Good heat durability that withstands lead-free compatible reflow soldering conditions
- Audio-visual equipment including TVs,VCRs and digital cameras.Electronic equipment used in onboard automobile equipment including car audio and ECU systems.Electronic equipment used in communication infrastructures including xDSL and mobile base stations.
- Design to customer requirement

RoHS Compliant(SGS Certified Result)

<1000ppm

ND

ND

ND

PBDEs

ND



Electrical Characteristics:

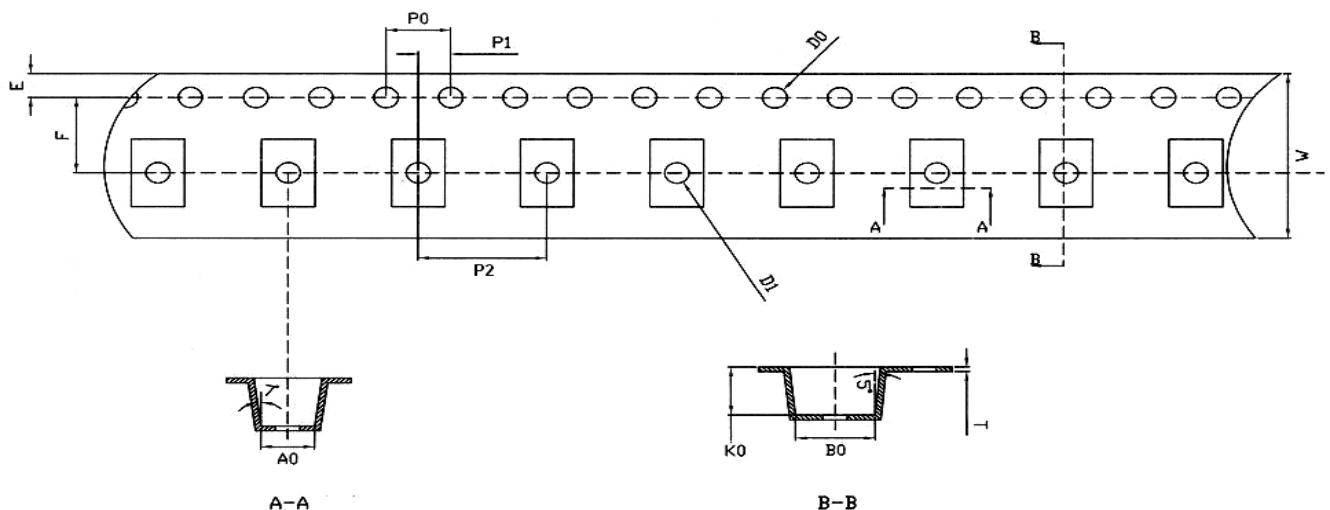
Part No.	Inductance (μ H)	Inductance tolerance	Q min.	Test frequency L,Q (MHz)	Self-resonant frequency (MHz)min.	DC resistance (Ω) max.	Rated current. (mA)max.
PEM453232-R10X	0.10	$\pm 10\%, \pm 20\%$	35	25.2	300	0.18	800
PEM453232-R12X	0.12	$\pm 10\%, \pm 20\%$	35	25.2	280	0.20	770
PEM453232-R15X	0.15	$\pm 10\%, \pm 20\%$	35	25.2	250	0.22	730
PEM453232-R18X	0.18	$\pm 10\%, \pm 20\%$	35	25.2	220	0.24	700
PEM453232-R22X	0.22	$\pm 10\%, \pm 20\%$	40	25.2	200	0.25	665
PEM453232-R27X	0.27	$\pm 10\%, \pm 20\%$	40	25.2	180	0.26	635
PEM453232-R33X	0.33	$\pm 10\%, \pm 20\%$	40	25.2	165	0.28	605
PEM453232-R39X	0.39	$\pm 10\%, \pm 20\%$	40	25.2	150	0.30	575
PEM453232-R47X	0.47	$\pm 10\%, \pm 20\%$	40	25.2	145	0.32	545
PEM453232-R56X	0.56	$\pm 10\%, \pm 20\%$	40	25.2	140	0.36	520
PEM453232-R68X	0.68	$\pm 10\%, \pm 20\%$	40	25.2	135	0.40	500
PEM453232-R82X	0.82	$\pm 10\%, \pm 20\%$	40	25.2	130	0.45	475
PEM453232-1R0X	1.0	$\pm 10\%, \pm 20\%$	50	7.96	100	0.5	450
PEM453232-1R2X	1.2	$\pm 10\%, \pm 20\%$	50	7.96	80	0.55	430
PEM453232-1R5X	1.5	$\pm 10\%, \pm 20\%$	50	7.96	70	0.6	410
PEM453232-1R8X	1.8	$\pm 10\%, \pm 20\%$	50	7.96	60	0.65	390
PEM453232-2R2X	2.2	$\pm 10\%, \pm 20\%$	50	7.96	55	0.7	380
PEM453232-2R7X	2.7	$\pm 10\%, \pm 20\%$	50	7.96	50	0.75	370
PEM453232-3R3X	3.3	$\pm 10\%, \pm 20\%$	50	7.96	45	0.8	355
PEM453232-3R9X	3.9	$\pm 10\%, \pm 20\%$	50	7.96	40	0.9	330
PEM453232-4R7X	4.7	$\pm 10\%, \pm 20\%$	50	7.96	35	1.0	315
PEM453232-5R6X	5.6	$\pm 10\%, \pm 20\%$	50	7.96	33	1.1	300
PEM453232-6R8X	6.8	$\pm 10\%, \pm 20\%$	50	7.96	27	1.2	285
PEM453232-8R2X	8.2	$\pm 5\%, \pm 10\%$	50	7.96	25	1.4	270
PEM453232-100X	10	$\pm 5\%, \pm 10\%$	50	2.52	20	1.6	250

PEM453232-120X	12	±5%,±10%	50	2.52	18	2	225
PEM453232-150X	15	±5%,±10%	50	2.52	17	2.5	200
PEM453232-180X	18	±5%,±10%	50	2.52	15	2.8	190
PEM453232-220X	22	±5%,±10%	50	2.52	13	3.2	180
PEM453232-270X	27	±5%,±10%	50	2.52	12	3.6	170
PEM453232-330X	33	±5%,±10%	50	2.52	11	4	160
PEM453232-390X	39	±5%,±10%	50	2.52	10	4.5	150
PEM453232-470X	47	±5%,±10%	50	2.52	10	5	140
PEM453232-560X	56	±5%,±10%	50	2.52	9	5.5	135
PEM453232-680X	68	±5%,±10%	50	2.52	9	6	130
PEM453232-820X	82	±5%,±10%	50	2.52	8	7	120
PEM453232-101X	100	±5%,±10%	40	0.796	8	8	110
PEM453232-121X	120	±5%,±10%	40	0.796	6	8	110
PEM453232-151X	150	±5%,±10%	40	0.796	5	9	105
PEM453232-181X	180	±5%,±10%	40	0.796	5	9.5	102
PEM453232-221X	220	±5%,±10%	40	0.796	4	10	100
PEM453232-271X	270	±5%,±10%	40	0.796	4	12	92
PEM453232-331X	330	±5%,±10%	40	0.796	3.5	14	85
PEM453232-391X	390	±5%,±10%	40	0.796	3	18	80
PEM453232-471X	470	±5%,±10%	40	0.796	3	26	62
PEM453232-561X	560	±5%,±10%	30	0.796	3	30	50
PEM453232-681X	680	±5%,±10%	30	0.796	3	30	50
PEM453232-821X	820	±5%,±10%	30	0.796	2.5	35	30
PEM453232-102X	1000	±5%,±10%	20	0.252	2.5	40	30

- 1、 Inductance is measured with a LCR meter:HP4284A & 3532-50 or equivalent.
- 2、 D.C .R is measured with a Digital Multimeter TH2512B or equivalent.
- 3、 Rated Current: The rated current is the current at which the inductance decreases by 25% from the initial value or the temperature rise is $\Delta T=40^{\circ}\text{C}$,whichever is smaller($T_a=20^{\circ}\text{C}$).

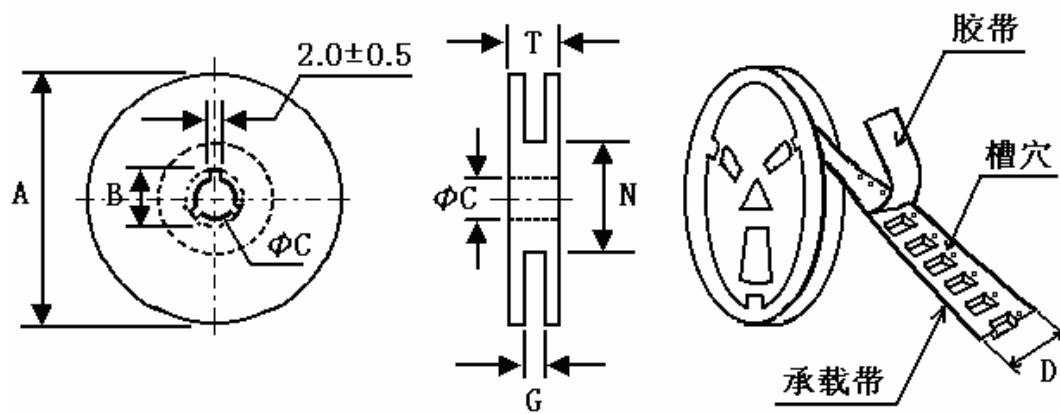
PACKAGING:

1 100 grids (400mm) of empty space in the front,and 500mm of masking tape to be extended;50 grids (200mm) of empty space in the rear



E	F	P1	D0	D1	P0	W	P2	A0	B0	K0	T
1.75	5.50	2.0	1.5	1.0	4.0	12.0	8.0	3.31	4.95	3.50	0.35

2 Reel dimensions (mm)



规格 Type	A	B	C	D	G	N	T
7"	178	21	13	12	14 Max	50 Min	18.4 Max

3. Packing Quantity and dimensions

Reel	Inner Box (mm)	外箱 Outer Box (mm)
500PCS/ Reel pieces/Reel	2000PCS /pieces/Inner Box	20000/0000PCS /pieces/Outer Box
7"	185×185×70	380×205×380/380×380×380